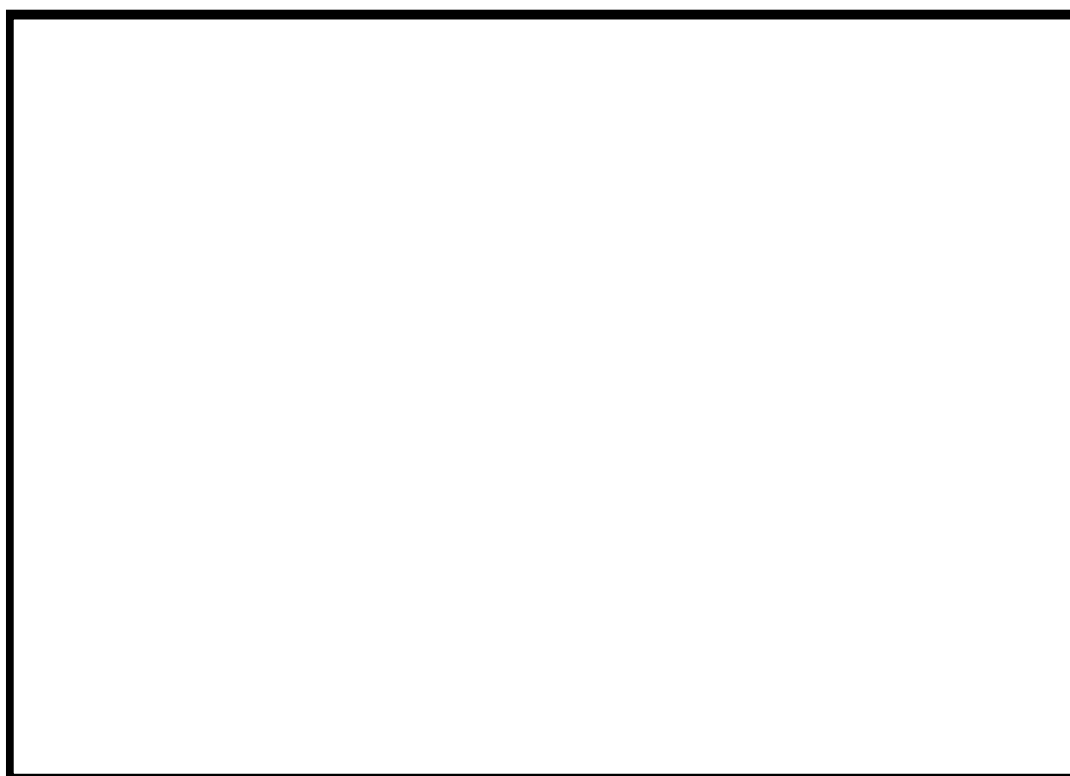

AlphaSoft

TrueTerm EPOC

The multilingual dictionary



Contents

| | |
|--|-----------|
| Introduction | 3 |
| What is <i>TrueTerm EPOC</i> ? | 3 |
| Installation and deinstallation | 4 |
| Installation | 4 |
| Before installing <i>TrueTerm EPOC</i> | 4 |
| Installation | 4 |
| Deinstallation | 5 |
| Psion | 5 |
| Desktop computer | 5 |
| Functions of <i>TrueTerm EPOC</i> | 6 |
| Start <i>TrueTerm EPOC</i> | 6 |
| Select dictionaries | 6 |
| Look up a keyword | 7 |
| History lists | 9 |
| Change search direction | 10 |
| The toolbar | 10 |
| Close dictionary | 11 |
| Tools and options | 12 |
| Set dictionary options | 12 |
| Show or blank graphic symbols | 12 |
| Show toolbar | 12 |
| Dictionary functions | 14 |
| Edit dictionary entries | 14 |
| Add new keywords | 15 |
| Change dictionary display | 16 |
| Create new dictionaries | 17 |
| Dictionary settings | 17 |
| Data storage | 20 |
| Save data | 20 |
| <i>TrueTerm EPOCSync</i> | 20 |
| Service and hotline | 22 |
| Known problems | 22 |
| Support | 22 |
| Appendix | 24 |
| Keyboard shortcuts | 24 |
| Index | 25 |

Introduction

What is *TrueTerm EPOC*?

Using the dictionaries of the **TrueTerm** series you can look up words as easily as in usual dictionaries. **TrueTerm** is an application program that stands out not only due to the quality of the integrable dictionaries but also due to its portability to various platforms. For example, **TrueTerm** runs on PCs under Windows 95/98 and under NT. Special versions are available for handheld computers such as PalmOS and Windows CE.

With the network version **TrueTermNet** you can for instance create and manage a company's terminology for translations in local networks. With **TrueTerm** you guarantee that all employees have access to the same dictionary data and that all employees can add their own data to the common database.

Installation and deinstallation

Installation

Before installing *TrueTerm EPOC*

This version of **TrueTerm** has been exclusively developed for Palmtop computers with the operating system **EPOC32** (for example Psion Series 5). On Palmtop computers with the operating system EPOC16 (for example Psion Series 3) **TrueTerm EPOC** does not work.

In order to install **TrueTerm EPOC** you need a desktop computer running Windows 95/98/NT

Installation

The installation is realized in two steps:

1. The installation of the **TrueTerm EPOC** data from the CD-ROM on your desktop computer (CD-ROM > Desktop computer).
2. From a desktop computer onto the handheld computer (Desktop computer > Psion).

CD-ROM > Desktop computer

- Insert the **TrueTerm EPOC** CD-ROM in the CD-ROM drive of your desktop computer.
- In the Windows Explorer select the CD-ROM drive and start the program **INSTALL.EXE**.
- Please now follow the instructions on the screen.

During the installation on your desktop computer you have the possibility to choose any languages (= dictionaries) you want to have copied on your PC first. In order to use the dictionaries on your handheld computer you always need the **TrueTerm EPOC** program files.

Desktop computer > Psion

- Connect your desktop computer with the handheld computer and check if the connection is able to work.
- In the menu **Start – Program files – TrueTerm EPOC** select the menu item **Installation TrueTerm EPOC Program files** and afterwards choose any dictionaries you want to install.
- After that, please follow the instructions of the installation program.

Note:

The transmission of the program to the handheld computer can take up to 20 minutes, depending on the size and the selected transfer rate.

Deinstallation

In this case you have to carry out a separate deinstallation on your handheld computer as well as on your desktop computer.

Psion

- Change to the **System** on the handheld computer by closing all applications on it and pressing the keyboard shortcut **Ctrl + S**. Select **Add/remove** and then the program **TrueTerm**.
- Here you may delete the current dictionary files by marking them and by tapping the **Delete** button with the stylus. It might be useful to deinstall dictionaries if you want to install other dictionaries and if the memory is not sufficient for it.
- To delete **TrueTerm EPOC** completely, you have to delete additionally the program files. For this, proceed in accordance with the dictionaries.

Desktop computer

- Click on **Start – Control panel – Software** on your desktop computer and select the program **TrueTerm EPOC**. Then click with the mouse on the **Delete** button.
- Then please follow the instructions of the deinstallation program.

Functions of *TrueTerm EPOC*

Start *TrueTerm EPOC*

Touch the menu item **Extras** in the **Extrasbar** of the handheld computer and start the **TrueTerm** program.

Alternatively you can start **TrueTerm EPOC** by the directory of the internal drive (Disk C). In that case, tap the drive letter in the title bar (caption) with the stylus. After that, touch twice and in quick succession the **TrueTerm** icon. Select now, by another double touch, the dictionary you want to activate. You will recognize the dictionary by the file extension **.dic**. If you don't want to use the stylus, you can use the cursor keys in order to select and the **Enter** key in order to confirm.

Another possibility to start **TrueTerm EPOC** is to change to the directory **System\Apps\TrueTerm**. There tap twice the **TrueTerm.app** icon with the stylus or select this icon with the cursor keys. Confirm with **Enter**.

Select dictionaries

With **TrueTerm EPOC** you can install several dictionaries on your handheld computer, for example spanish and german. This means you need only one program to use different dictionaries.

To call up the dictionary, please select the corresponding dictionary in the dialog box **Open file** after the start of the **TrueTerm EPOC** program. You call up the dialog box by touching the **Open** button:



Alternatively you can activate the menu of **TrueTerm EPOC** with the **Menu** key or the command icon **Menu**. There select **File** and the menu item **Open dictionary** or press the keyboard shortcut **Ctrl + O**. In both cases the following dialog box appears:



In the **Name** box you can select a dictionary. If the desired dictionary is not displayed, you can select a dictionary by touching the arrows on the right and on the left of the name box.

If you use a memory card (drive D) besides the internal disk (C) you can also save data on it.

If you want to change to another folder and/or another disk, either tap **Folder** or **Disk** to select a folder or a disk. You can call up **Name**, **Folder** and **Disk** by the cursor keys as well. You can see the whole choice within the input fields by one short tap with the stylus on the input field.

You can see the whole directory of a disk by one short tap on the **Browse** button or by pressing the keyboard shortcut **Ctrl + D**.

Confirm the selection of the dictionary with **OK**. The dictionary is being loaded and the program window of **TrueTerm EPOC** reappears.

If you want to go back to another dictionary, repeat this process for the desired language.

Look up a keyword

If you want to look up a word, please enter it by the help of the keyboard. For that, position the cursor in the **Keyword** input field. You can position the cursor by tapping the keyboard shortcut **Ctrl + K** or **Esc** or with a touch on the input field with the stylus. As soon as you enter the first letters, the program browses through the keyword list and narrows down the possible translations.

For example, if you enter the word *set*, you will get the following **Dictionary entry**:



In the **Dictionary entry** field the meanings of a word are explained in different meaning fields. If a word has many different meanings, a scroll bar is displayed on the right of the field, that you can move with the stylus. In order to change to the **Dictionary entry** field you can also press the keyboard shortcut **Ctrl + H** and then move the cursor with the help of the cursor keys.

After you have entered a word, this word is marked in the keyword list and you can browse through the keyword list with the cursor keys of the keyboard. Meanwhile, the text in the **Keyword** input field remains the same.

With the scroll bar on the right of the keyword list you can also browse through this list. The symbols on the left of a keyword have the following meanings:

| | |
|---|--|
| ➔ | currently activated keyword of the original dictionary |
| ⊕ | new keyword, defined by the user |
| ⊗ | keyword that has been changed by the user |

If you want to enter a new keyword immediately after you have entered a word in the **Keyword** input field, press the keyboard shortcut **Ctrl + K** or **Esc** to go back to the **Keyword** input field. By that you delete the entry in the **Keyword** field at the same time.

With the **Enter** key you mark the input in the **Keyword** input field. As soon as you have marked the input, just enter the next keyword and the text inside the input field will be typed over.

The simplest way to find the right translation of a term in the **Dictionary entry** field is to press and keep pressed the **Control** key and to tap the word in the **Dictionary entry** with the stylus. The chosen word is transferred to the **Keyword** entry field and the search function is started. Here, the search direction can possibly be changed. **TrueTerm EPOC** automatically saves every word you call in this way and confirm with the **Enter key** in the so-called **History list** so that you can look it up again later (see: **History lists**).

To change the size of the keyword list, touch the bar between the keyword list and the dictionary entry field until it becomes black. After that you can move the bar to the left or to the right in order to make room in one of the lists. To change the screen see also: **Show toolbar**.

History lists

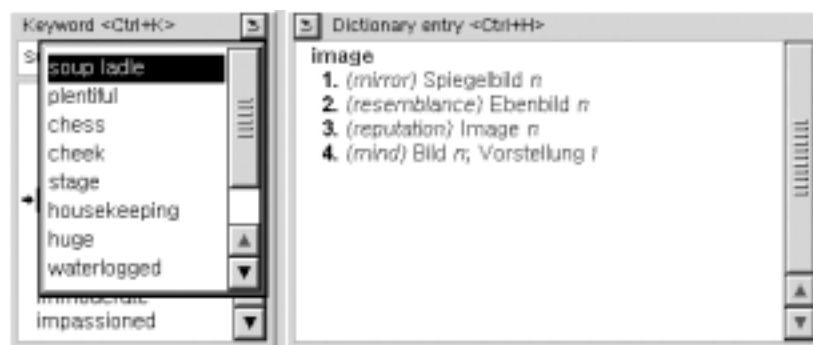
There are two so-called history lists in which your selected keywords are saved. These lists enable you to go back to a word you want to look up again any time.

Each keyword you enter in the **Keyword** input field and confirm with the **Enter key** is automatically saved in the history list containing the entered keywords. The keyword that is marked in the keyword list is also transferred to the history list by touching and confirming with the **Enter key**. Keywords in the **Dictionary entry** field that you mark and call up by the **Control** key and by touching them simultaneously with the stylus (and then confirm with **Enter**) are saved in a separate history list.

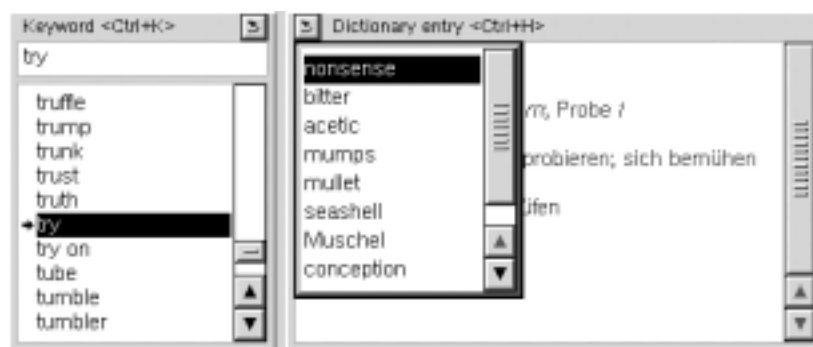
If you want to look up at a word again, you have to call up the history list by the



button. The left button refers to the words you have entered in the **Keyword** input field. You can also press the keyboard shortcut **Ctrl + I** if the cursor is in the keyword list:



the right button concerns the words you have called up in the **Dictionary entry** field:



Here you can also press the keyboard shortcut **Ctrl + I** if the cursor is in the dictionary entry field.

Within the respective history list you select a word by touching it. You can also use the **Enter key** in order to have the marked entry displayed.

You can browse the history lists either by moving the scroll bar up and down or by touching the arrow keys below the scroll bar or by using the arrow keys of the keyboard.

If you don't need the entries of the history lists any longer you can delete them. With the **Delete** key you delete a marked entry and with the keyboard shortcut **Ctrl + Del** you delete all the entries of a list.

Please notice that the history list of the entered keywords refers to a specific language, that is, if you change to another search direction you change to another history list as well.

Change search direction

The change to another search direction is done by the buttons with the language icons of the toolbar.










Alternatively you can use the keyboard shortcut **Ctrl + W** in order to change to another search direction.

If you want to activate another dictionary, please see chapter: **Select dictionaries**.

The toolbar

With the buttons of the toolbar you can carry out the most important functions of the dictionary:

| | |
|---|---|
|  | Open and select dictionaries in order to activate dictionaries (see: Select dictionaries). |
|  | Calling up dictionary settings: This way you fix the dictionary files you want to load and you set the font of the keyword list (see: Dictionary settings). |
|  | Add new keywords (see: Add new keywords). |
|  | Save new keywords and changed dictionary entries (see: Add new keywords or Edit dictionary entries). |
|  | Select search direction (see: Change search direction). |
|  | Show or blank changed user-specific entries (see: Edit dictionary entries). |
|  | Change current font in the Dictionary entry field (see: Edit dictionary entries). |



Show only new or changed keywords and dictionary entries
(see: ***Change dictionary display***).

To blank the toolbar, please see chapter: ***Show toolbar***.

Close dictionary

In order to close **TrueTerm EPOC**, touch once the **TrueTerm** icon of the toolbar. Afterwards a dialog box is displayed, in which you have to confirm the command to close the application program by a touch on the **Close file** button.

Tools and options

Set dictionary options

The menu item **Tools** offers two possible **Options** to be set. If you have selected the option **Open last edited dictionary at the program start**, the dictionary used last is automatically displayed.

However, if you want to start **TrueTerm EPOC** with another dictionary without undoing the selected option, you may start the desired dictionary by the directory of the internal drive as well. To this end, tap with the stylus on the drive letter in the title bar (caption). After that, touch twice in quick succession the icon **TrueTerm**. Then select the dictionary you want to activate by another double touch. You will recognize the dictionary by the file extension **.dic**. If you don't want to use the stylus, you can use the cursor keys for selection and the **Enter** key for confirmation.

If you have deactivated the option **Open last edited dictionary at the program start**, you will be automatically asked for the desired dictionary in the dialog box **Open file** at the program start of **TrueTerm EPOC**.

Show or blank graphic symbols

You can show or blank the graphic symbols (see: **Look up a keyword**) on the left of the keyword in the keyword list. These symbols indicate if a keyword is active, if a keyword has been changed or if a new keyword has been added. For that, select the menu item **Options** within the **Tools** menu. If you want to activate the graphic symbols, make a tick. In order to deactivate the graphic symbols, you have to delete the tick.

Show toolbar

On the toolbar of **TrueTerm EPOC** you can easily execute all important functions by buttons.



However, if you prefer to use the place taken by the toolbar to enlarge the dictionary entry field, you can blank the toolbar: Select the menu item **Show toolbar** in the **Tools** menu. Only if you make a tick, the toolbar will be displayed.

Dictionary functions

Edit dictionary entries

To edit an dictionary entry, position the cursor in the **Dictionary entry** field or press the keyboard shortcut **Ctrl + H**. Now you can also use the cursor keys to move inside the dictionary entry and to make changes in particular places or to add new text. Furthermore, you can cut , copy and paste marked words or passages by the **Edit** menu. Never forget to save the changes by using the **Save** button

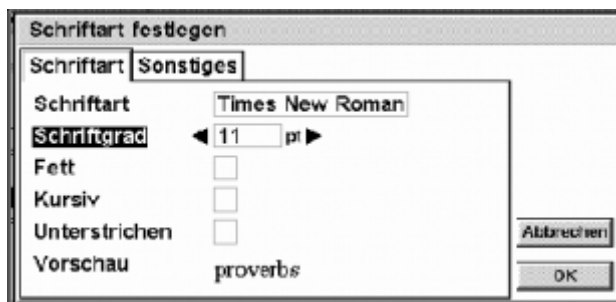


or by the menu call **Edit – Dictionary entry – save**. You will recognize the changed entry by a circle in front of the keyword within the keyword list.

Within a dictionary entry you can also mark passages and highlight them by special formattings. To this end, you have to position the cursor in the **Dictionary entry** field, as mentioned above, and there you have to mark the word or passage by the stylus or by pressing the **Shift key + Cursor key**. You can call up the options to set the current font or format the current paragraph in the **Dictionary entry** field by touching the **Font/Paragraph** button

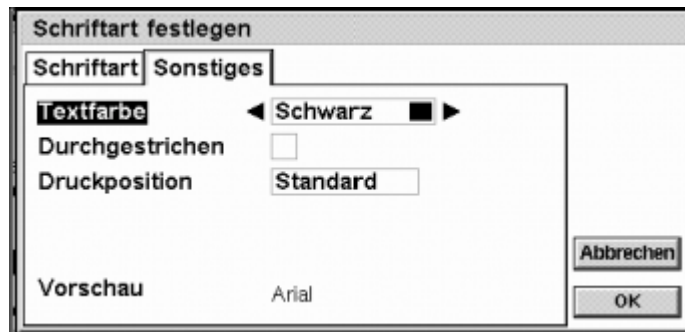


or by calling up the menu item **Edit – Dictionary entry – current font** . The following dialog box **Set font:** is presented:



Here you can select the font (Arial, Times New Roman, Courier), type size and further options of the current cursor

position or a marked word or passage within the **Dictionary entry** field. On the card **Other** you will find:



Here you can choose the text color in shades of grey and further options. You can select the individual menu items by touching the arrows on the right and on the left of the list box. To see the whole choice tap in the list box with the stylus. Confirm your choice with **OK**. After that, the dictionary entry is being formatted. Here as well, don't forget to save all changes as mentioned above.

Changed dictionary entries are marked by a circle in the keyword list. If you want to blank these changes in the display touch the



button of the toolbar or call up the **Edit – Dictionary entry – original entry** menu. In this way you can redisplay your changes. Please notice that changes of formatting cannot be displayed or blanked.

Add new keywords

You can add a new keyword by touching the



button of the toolbar or by calling up the menu item **new** in the **Edit – Keyword** menu. The following dialog box with an input line appears:



Now you can enter the new keyword in the input line. Confirm with **OK**. You'll see the new keyword sorted in alphabetical order within the keyword list and marked by a plus. The cursor is blinking in the **Dictionary entry** field and you can immediately start to enter the translation. Please save your entry by touching the



button of the toolbar or by selecting the menu item **save** in the **Edit – Dictionary entry** menu or else by pressing the keyboard shortcut **Ctrl + S**.

To change the entered keyword call up the **Edit – Keyword** menu and select the menu item **rename**. A dialog box with an input line appears. There you'll find the marked keyword to be changed. Now you can change it. Confirm the change by **OK**.

To delete the entered keyword you also have to call up the **Edit – Keyword** menu and then to select the menu item **delete**. A dialog box appears and asks if you really want to delete the word. Confirm the deletion by **OK**.

You cannot delete keywords of the dictionaries supplied by **TrueTerm EPOC** or keywords you have changed.

Change dictionary display

As soon as you have added a new keyword or modified a dictionary entry you will recognize the new keywords by a plus in front of the keyword. You will recognize changed keywords by a circle in front of the keyword.

If you want to show only the new or changed keywords and dictionary entries you have to touch the **Dictionary Application Symbol** of the toolbar:



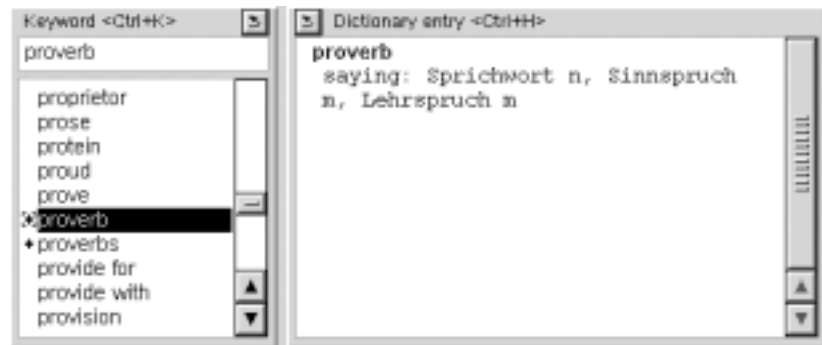
TrueTerm now shows the user-defined entries:



If you want to go back to the standard display you have to tap the **Dictionary Application Symbol** in the toolbar with the stylus:

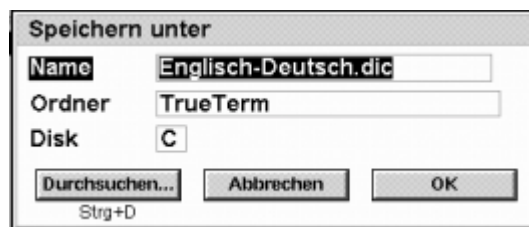


Now, all data are shown together, that is you have access to the original data and the user-specific data. Both kinds of data are included on the keyword list.



Create new dictionaries

To create a new dictionary, call up the **File** menu and there select the menu item **New dictionary**. Automatically you get to the dialog box **Dictionary settings** where you can select the desired options. For further details please see: **Dictionary settings**. Now you can create a new dictionary that suits your requirements, for example english-spanish and english-german as two search directions in one dictionary. Confirm the settings in this dialog box with **OK** and save the new dictionary by calling up the **File** menu and selecting the menu item **Save dictionary**.. The dialog box **Save as** appears:



Here please enter a name for the new dictionary and if necessary the folder and the disk, too. Be careful that you use **.dic** as file extension. Confirm the storing by **OK**. Now you can use and edit this dictionary as the other dictionaries.

Dictionary settings

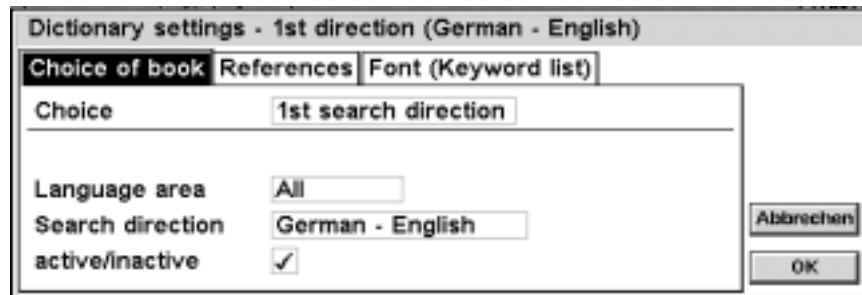
The settings are necessary

- to create a new dictionary (see: **Create new dictionaries**);
- to change particular options for the dictionaries you use and
- if options that have been set in dictionaries are lost.

The easiest way to call up the **Dictionary settings** is to touch the

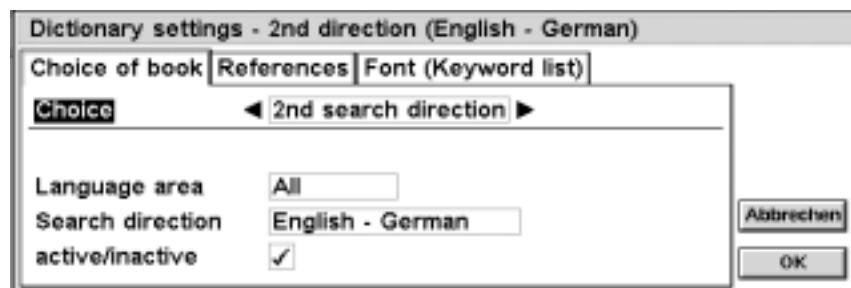


button of the toolbar. You can also use the menu call **File – Dictionary settings** or the keyboard shortcut **Ctrl + E**. After that, the dialog box **Dictionary settings** appears:



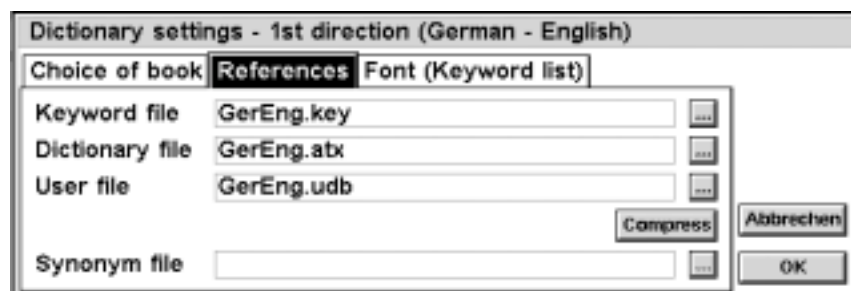
On the card **Choice of book** you can select and activate a search direction. In the Chooser menus you can move the cursor keys forwards and backwards. To see the whole choice, tap the input field with the stylus.

Assuming that you want to create a new dictionary with the search directions german-english and english-german. As first direction select the language combination german-english and activate it as mentioned above. Proceed accordingly to select the search direction english-german as second language combination:



After fixing one of the search directions you have to define the references of it.

Assuming you want to define the references of the second search direction, that is english-german. Change to the card **References**:

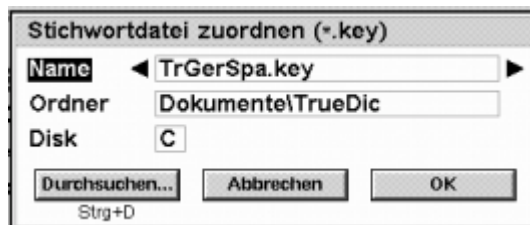


In this case you have to define at least three files as references.

Touch the

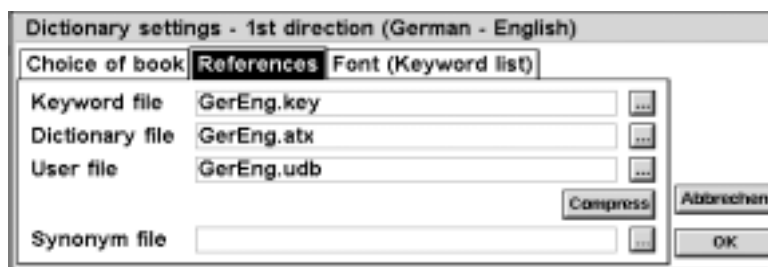


button on the right of each input line. The dialog box **Assign keyword file** appears, for example:



Here, enter the keyword file concerned, that you have defined in the chooser menu.

Proceed in the same way with the dictionary file and the user file. After you have defined at least these three files for each book, the settings on the card **References** should roughly look like this:



Now you can exit the **Dictionary settings** by **OK**. Don't forget to save the dictionary settings at **File – Save dictionary**.

If you want to create a dictionary that exclusively contains your personal entries, please define only one user file of the corresponding search direction but no keyword file or dictionary file. Thus this dictionary will only contain user entries.

A further option is to format the font of the keyword list. Please select the card **Font (Keyword list)**:



The settings of the font will only be valid for the keyword list.

Data storage

Save data

The data storage is executed in an absolutely uncomplicated way. With the software package **PsiWin** you can easily and comfortably connect your desktop computer to your handheld computer. You only have to call up the Psion-workstation on your desktop computer. The software connects the two computers. Now you can access files on your handheld computer in the same way as with the Windows-Explorer.

To save the important **Dictionary files** of **TrueTerm**, go to the directory **TrueTerm**. Copy all the files with the file extension **.udb** on a storage medium of your choice, for example the hard disk of the desktop computer. These files are user-specific data you have captured on your handheld computer. You have to save only these files because you can retransfer the supplied dictionary files of **TrueTerm EPOC** on your handheld computer (see: **Installation, Desktop computer->Psion**) any time.

TrueTerm EPOCSync

The extended function of comfortable data exchange with your desktop computer is provided by the supplementary software **TrueTerm EPOCSync**. With this program you can:

- synchronize dictionaries, that is integrate dictionary entries, which you have captured for example on your desktop computer, in the dictionaries of the handheld computer and vice versa;
- make easy dictionary backups;
- import keyword lists that you have already created on the handheld computer.

After installation **TrueTerm EPOCSync** is automatically integrated in your electronic dictionary system. The synchronization of the dictionary data from the desktop computer to the handheld computer and vice versa is executed each time you call up the Psion-synchronization.

If you want to acquire the **TrueTerm EPOCSync** please contact directly the **AlphaSoft** company or send an e-mail to *sales@trueterm.com*.

Service and hotline

Known problems

Problem:


In case you still use **PsiWin 2.0** or any older version of **PsiWin**, the icons that facilitate the installation of the dictionaries from the desktop computer to the handheld computer do not work.

Solution:

Call up the icon **Add-On PsiWin 2.0** once after the installation on the desktop computer. Then, the installation can also be executed on the handheld computer running **PsiWin 2.0**.

Support

For all problems and questions please contact the **AlphaSoft** company (preferably via e-mail):

| | |
|--|---------------------|
|  | |
| Production and distribution of software | |
| Aldinger Strasse 86 | |
| D-70806 Kornwestheim | |
| Germany | |
| | |
| Owner: | Mrs Sigrun Goellner |
| | |
| Hotline: + 49 (0) 7141 / 85 05 06 monday, tuesday 14:00-15:00 p.m. wednesday – friday 15:00-16:00 p.m. | |
| | |

| |
|--|
| Phone +49 71 54 / 18 27 00 |
| Fax +49 71 54 / 49 39 |
| Homepage: www.trueterm.com |
| E-mail: support@trueterm.com |

Further information and support on **Psion/EPOC** is provided on the homepage of the **Psion** company at <http://www.pSION.com>.

Appendix

Keyboard shortcuts

| | |
|-----------------------------------|--|
| <i>Ctrl + Del</i> | Delete all the entries in a History list . |
| <i>Ctrl + E</i> | Call up the dialog box Dictionary settings . In this dialog you can define the references to the user-defined dictionaries. |
| <i>Ctrl + H</i> | Position the cursor in the Dictionary entry field and marks the text inside. |
| <i>Ctrl + I</i> | Show the History list of the keyword list or the dictionary entry depending on the position of the cursor. |
| <i>Ctrl + K or Esc</i> | Position the cursor in the Keyword input field. A text, in case there is one, will be deleted. |
| <i>Ctrl + L</i> | Position the cursor in the Keyword list . |
| <i>Ctrl + O</i> | Open the dialog box Open file . Now you can open a dictionary that you have created yourself for example. |
| <i>Ctrl + S</i> | Save the current changes made by the user. |
| <i>Ctrl + Tab</i> | Tabulator-function inside the dictionary entry. |
| <i>Ctrl + W</i> | Change to another search direction. |
| <i>Tab</i> | Change to the next keyword and then to its dictionary entry. |

Index

A

AlphaSoft 22

C

Circle 14, 16

Cursor keys 6, 12, 14, 18

Cut 14

D

Data storage 21

Deinstallation 4

Delete 5

Desktop computer 4, 21, 23

Dictionary 5, 6, 17, 21

close 11

create 17

open 6, 12

save 17, 20

select 6

settings 17

Dictionary Application Symbol 16

Dictionary display

change 16

Dictionary entry 7, 14, 16

edit 14

save 14, 16

Dictionary files 10, 21

Dictionary options 12

set 12

Dictionary settings 10, 17, 20

Disk 7, 18

Drive letters 6, 12

E

Edit menu 14, 16

Enter key 6, 8, 12

EPOC32 4

Extras 6

Extrasbar 6

F

File menu 17

Font 10, 14, 20

Font/Paragraph button 14

set 14

H

History lists 9

Hotline 23

I

Installation 4, 23

K

Keyboard shortcuts 6, 7, 8, 9, 10, 14, 16,
18

Keyword 7, 14, 16

delete 16

look up 7, 12

new 16

rename 16

Keyword file 19

assign 19

Keyword list 7, 12, 14, 17, 20

M

Memory card 7

Menu key 6

O

Original entry 15

P

PalmOS 3

Plus 16

Program files 4

Psion 24

Psion Series 3 4

Psion Series 5 4

PsiWin 21

PsiWin 2.0 23

R

References to dictionary file

set 19

S

- Save button 14
- Screen 4, 9
- Search direction 10, 18
 - change 10
- Support 23
- Symbols
 - graphic 12
- Synchronization 21
- System 5

T

- Title bar (caption) 6, 12
- Toolbar 10, 12, 16
 - blank 11, 13
 - show 12
- Tools 12
- Tools menu 12, 16
- TrueTerm 3, 6, 11, 21
 - Start TrueTerm EPOC 6
 - TrueTerm EPOC 3, 6, 11
 - TrueTerm EPOCSync 21
 - TrueTermNet 3

U

- User entries 11, 20

W

- Windows 95/98 3
- Windows CE 3