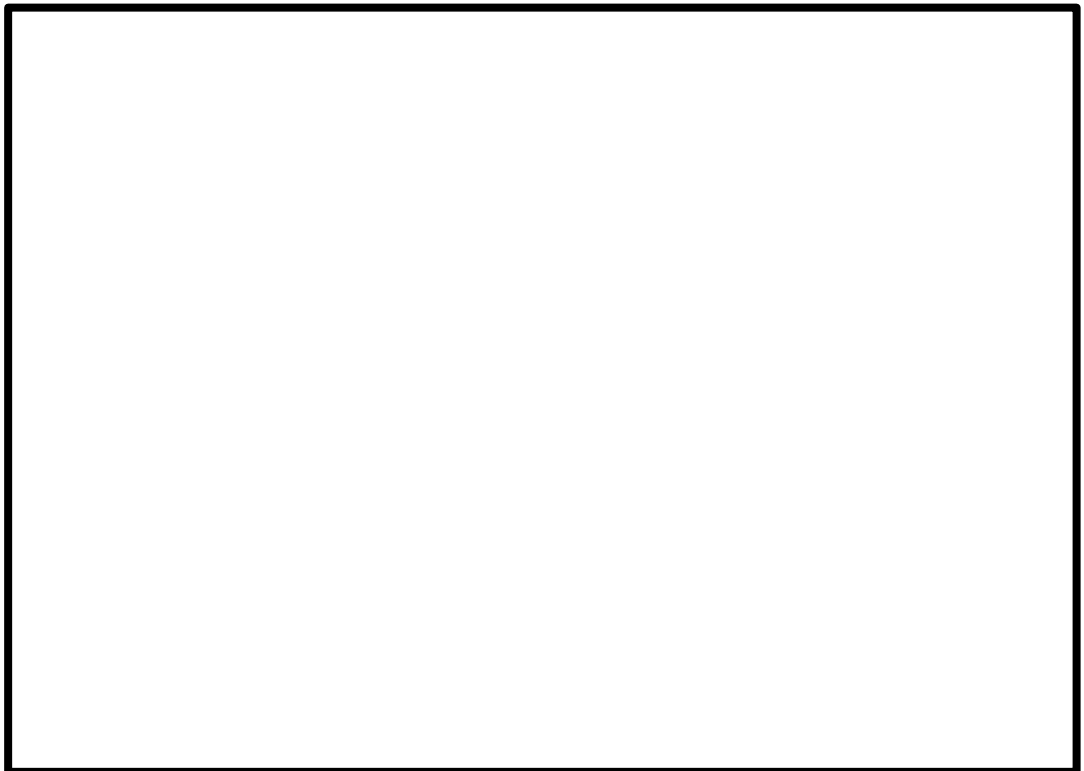

AlphaSoft

TrueSquare EPOC

The program to generate multi-lingual crossword puzzles



Contents

Introduction	3
What is <i>TrueSquare EPOC</i> ?	3
<i>TrueSquare EPOC</i> Features	4
Starting <i>TrueSquare EPOC</i>	4
Registration	4
<i>TrueSquare EPOC</i> Menu Functions	4
New Crossword	4
Choosing Subjects and Languages and Importing your own data.	5
Open crossword	9
Crossword Settings	9
Save a Crossword	10
Exporting a Crossword	11
Closing <i>TrueSquare EPOC</i>	11
Solving Crosswords with <i>TrueSquare EPOC</i>	11
Vocabulary puzzle	11
Delete	12
Mystery word	12
Help	13
Coded puzzle	13
Grid puzzle	14
Alphacross puzzle	15
Data Security	16
Saving data	16
Customer Service and Hotline	17
Support	17
Appendix	18
Key combinations (Shortcuts)	18
Index	19

Introduction

What is *TrueSquare EPOC*?

The **TrueSquare EPOC** program allows you to generate several different types of crossword puzzle in your mother tongue or in a foreign language. So you can play with words in your mother tongue or extend your knowledge of a foreign language. You can generate puzzles either by importing personal data and subjects into the program or by using data and subjects delivered with TrueSquare.

TrueSquare EPOC consists of the following:

- ?? **Vocabulary puzzles**
- ?? **Coded puzzles**
- ?? **Grid puzzles**
- ?? **Alphacross puzzles**

Installing information is contained in the file **setup.htm**.

Further **AlphaSoft** software is available for managing your vocabulary. With the **TrueCard EPOC** learning program you can look up, capture, administer and learn vocabulary in several languages. With the dictionaries from the **TrueTerm** range you can look up words in the simple manner that you are accustomed to with conventional dictionaries. **TrueTerm** runs on several platforms, e.g. on the PC under Windows 95/98/NT/2000 and on mobile devices running operating systems such as PalmOS, EPOC and Windows CE.

If you already use a TrueTerm or TrueCard product from AlphaSoft, you can import data from there into TrueSquare and use it to generate crossword puzzles (see **Crossword Settings**).

TrueSquare EPOC Features

Starting TrueSquare EPOC

You start the program by tapping on the **TSquare** symbol which appears in the Extras menu called up via the **Extras** icon on the lower right hand side of the display of your mobile computer.

Registration

To use **TrueSquare** you need a registration number. In the demo version a registration dialog appears as soon as you call up the program. If you send your identification number to **Alphasoft** you will receive a registration key which allows you to use the program in its entirety. Note that in the demo version you can only use a maximum of ten words for generating crosswords.

TrueSquare EPOC Menu Functions

The menu that allows you to execute the most important functions of **TrueSquare EPOC** is called up by pressing the **Menu** key situated at the left of the space bar on the keyboard of your mobile computer. Now you will see a **Menu bar** at the top of your display with the menu headings **File**, **Settings** and **Help**. If you tap on one of these a list of tasks or commands is shown.

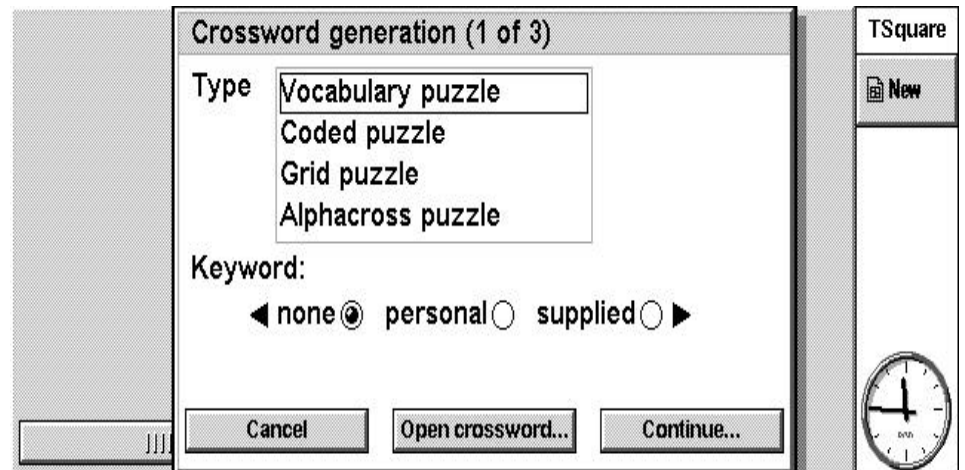
Alternatively you can display the **Menu bar** by tapping with the pen on the menu command icon situated at the top left hand corner of the display.

New Crossword

In the menu bar choose the heading **File** and the command **New** or tap on **New** in the **Toolbar** on the right of the display. Alternatively you can use the key combination **Ctrl + N**. A dialog box opens in which you can select the type of crossword that you wish to generate.

TrueSquare shows four types of crossword (see **Solving Crosswords with TrueSquare EPOC**):

- ?? **Vocabulary puzzle**
- ?? **Coded puzzle**
- ?? **Grid puzzle**
- ?? **Alphacross puzzle**



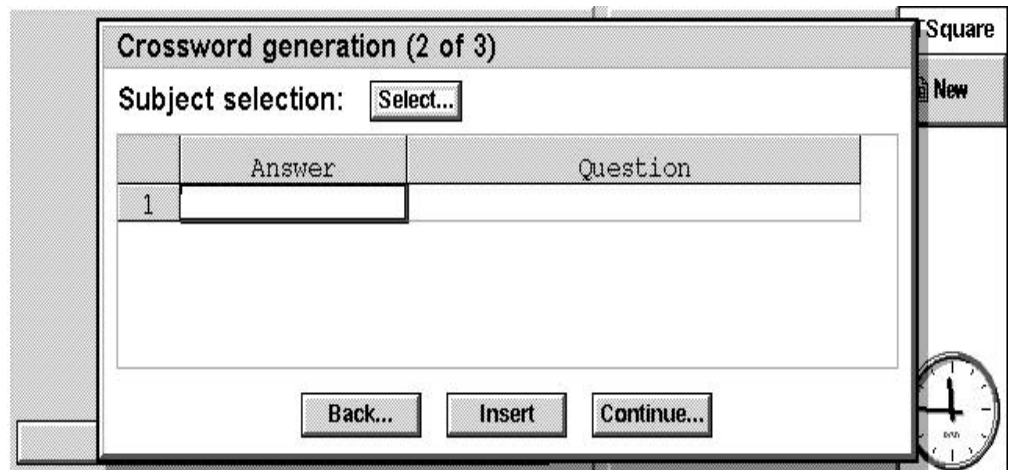
Tap with the pen on one of the crossword puzzle types. If you have chosen the vocabulary puzzle or the grid puzzle you can enter a mystery word in the puzzle by tapping the corresponding radio button:

- ?? **personal:** You enter your own mystery word in the input field.
- ?? **supplied:** The mystery word is supplied by the system.
- ?? **none:** You do not wish to have a mystery word.

To proceed now tap on **Continue...**

Choosing Subjects and Languages and Importing your own data.

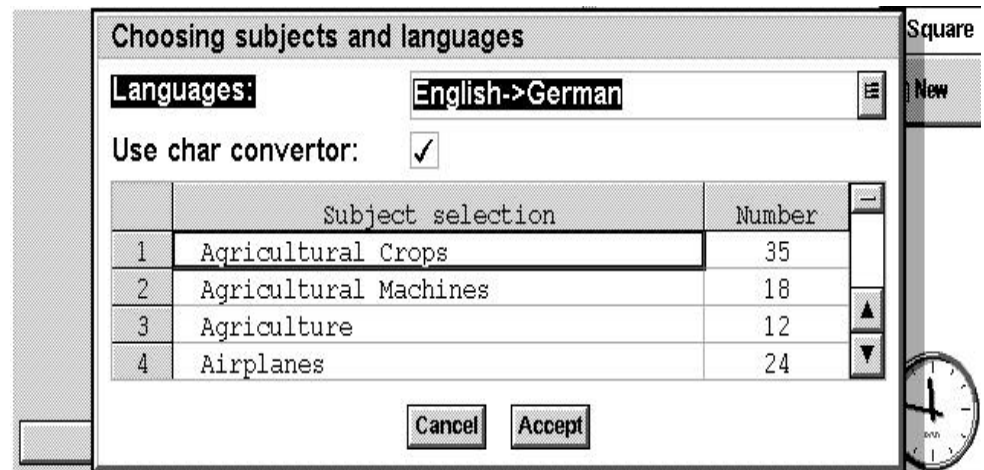
Now you can choose one or several subjects for the generation of a crossword.



My subjects: Via the **Insert** button you can include your own data in the table and thus produce your own personal crossword. To do this you need to supply a list of words that you have collected in **Word**, for example. Copy it into the clipboard with **Ctrl + C** and then transfer it into the table with the **Insert** button. Your list of words should have the format **Question; Answer** (e.g. word; translation) and each pair of words has to be separated by a semicolon i.e. "Word; Translation". If you wish to delete a line, tap the number of the line, it will then be highlighted and you can delete it by pressing the **Del** key.

Supplied subjects and data from other Alphasoft products: If you tap on the **Select...** button a new dialog box appears. First you have to choose the language combination with which you wish to create the puzzle. To do this simply tap on the desired combination within the **Languages** list. Here you can select **TrueCard** or **TrueTerm** data in order to add vocabulary from these programs to **TrueSquare**. **TrueSquare** will then use these data to generate a new puzzle. If you want the system to take into account special characters for the chosen language combination please tick **Use character convertor**.

Next you can select and tick (or check) one or more subjects by tapping them with the pen. The number of words for each subject is shown in the right hand column of the table. This information is provided to help you decide which subjects to choose. You can remove the tick by tapping on it a second time. If you wish to insert your own data and there are already words or a subject in the table, you can delete these by marking them with **Ctrl + A** and then pressing **Del** to make room for your data.

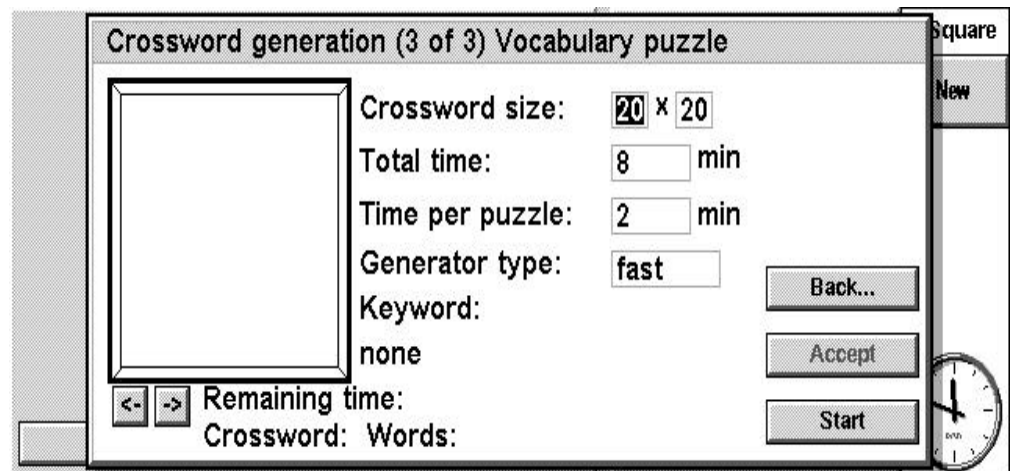


Apart from the supplied subjects the **Clues** delivered with the system can also be recommended. Choose one of these files from the list of **Languages**. You can limit the number of words (maximum 1000 words) from a list that are to be used for a crossword by placing a tick beside the **Number of words**. Use the arrows or enter a number in the box. A history file prevents the same questions coming up again and again. You can delete the history file by pressing **Delete**.

When you have made your choice tap the **Accept** button. The table will now contain the words to be used for generating the crossword. The words and their translations are numbered and appear in **Question; Answer** format. By tapping the button **Continue...**, you open the dialog box for making some of the settings for the crossword:

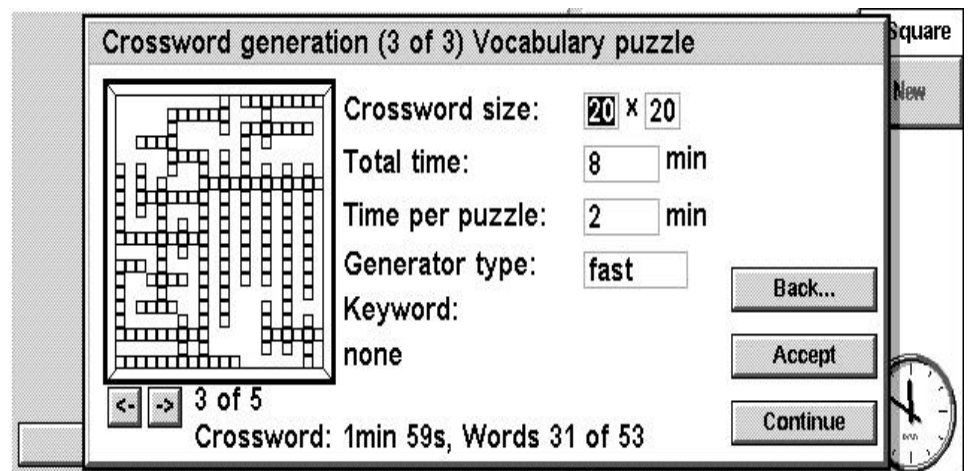
- ?? **Crossword size:** Tap on the number to set the size of the grid (e.g. 20 x 20 squares). Alternatively you can jump from one number to the next higher or lower one by pressing the arrow keys on the keyboard (arrow up or arrow down).
- ?? **Total time**, in minutes.
- ?? **Time per puzzle**, also in minutes.
For example: If you enter 10 minutes for the total time and 2 minutes for each crossword, then the program will generate 5 different crosswords.
- ?? **Type of generation:** you can determine the speed of generation by selecting either slow or fast with your pen.
- ?? **Mystery word:** If you decide to generate a **Vocabulary puzzle** or a **Grid puzzle** with your own personal **Mystery word**, then it will appear in its entirety. A mystery word supplied by the system

will only appear as asterisks. Otherwise the word none will be shown.



After you have made these settings press the **Start** button. The system then proceeds to generate crossword puzzles that you can see in the preview box.

Beneath the preview box you can see the **Remaining time** in total and for each crossword as well as the number of words that are being used for every crossword that is generated. You can interrupt the process at any time by pressing the **Stop** button. The system will store the five best crosswords (those with the largest number of words). They are numbered 1 to 5 and can be called up via the arrows underneath the preview box. If one of the crosswords appeals to you tap the **Accept** button. Otherwise proceed by pressing the **Continue** button and let the system run until it provides you with a suitable crossword.



Whilst preparing for the final crossword generation process you can return to the previous dialog box in order to make changes, by pressing the **Back** button.

Open crossword

To open an existing crossword, select the command **Open** under the **File** menu heading in the menu bar or press the **Ctrl + O** keys. A dialog box appears in which you can enter or select the name of a crossword with the file suffix **.ts**, the folder in which it has been saved and the corresponding disk drive (e.g. disk C). Generally the system will create a standard folder called **TrueSquare**.

Press the **Browse** button or use the key combination **Ctrl + B** to search for a file directly on the appropriate disk drive. In the next dialog box you can then select the file that was searched for by confirming the selection with **OK**. The details are now shown in the "Open file" dialog box. Confirm again with **OK**.

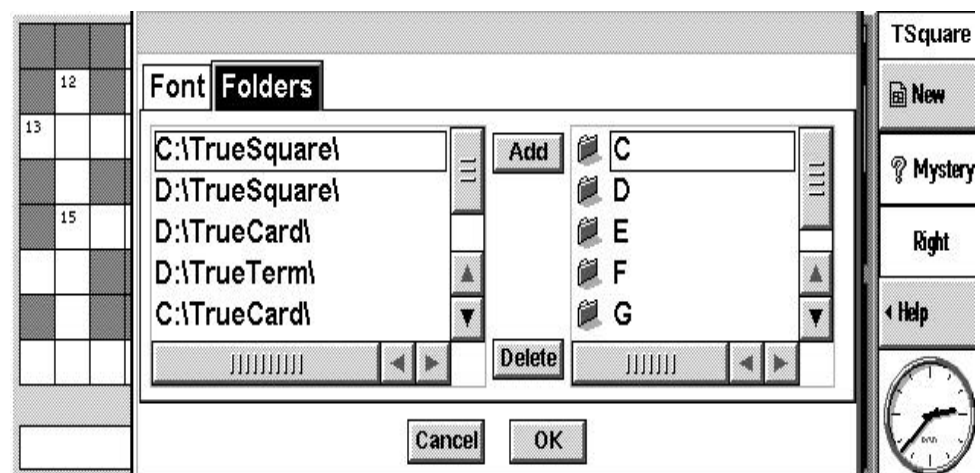
You can delete your selection by pressing the **Cancel** button.

Crossword Settings

You can make puzzle settings in the menu **Settings**. Under the menu item **Options** there appear two pages in a dialog box:

Folders

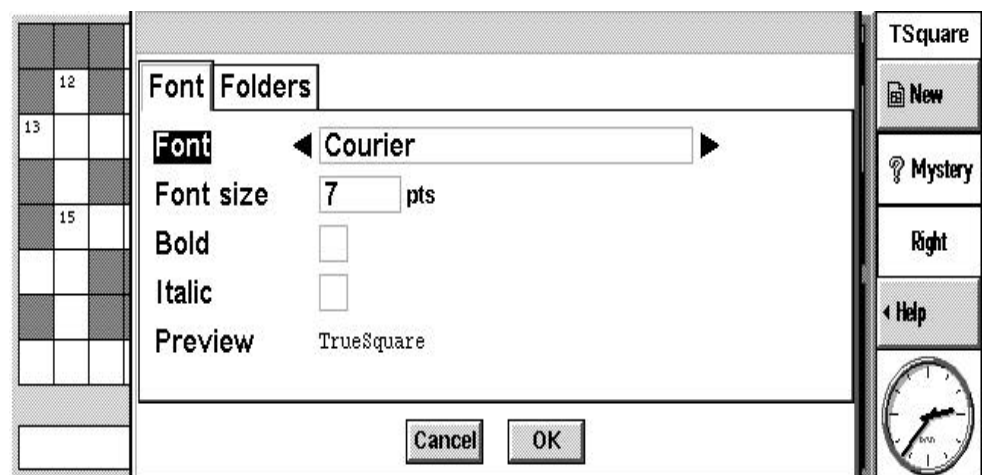
This feature enables you to add or delete folders to the disks on which you save your data. Make your selection and confirm with **OK**.



Font

This option allows you to determine the font type, size and style.

You can view the various font types by pressing the arrows in the combo box or those on the keyboard. You can also select the desired font directly with the pen in the combo box. Proceed in the same way to select the font style. Just check the box beside **bold** and/or **italic** with the pen. In the bottom line beside **Preview** you can see the effect of your settings. Confirm with **OK**.



Tick the function **Expand** in the menu **Settings** if you wish to have the full text of a clue or a translation (depending on the type of puzzle being generated) displayed in the lower part of the window. Otherwise deselect the box to hide the window.

The **Right word** feature in the **Settings** menu allows you to control the right answers in the **Vocabulary puzzle**. If the word you enter is correct, the arrow to the left of the word turns black. Otherwise it stays unchanged. You can activate this feature yourself by making a tick in the **Settings** menu or by tapping the **Right** button in the toolbar.

You can hide the toolbar by deactivating the feature **Show toolbar** in the **Settings** menu.

Save a Crossword

Under the menu-heading **File** choose the command **Save**. A dialog box appears where you have to enter a name for your crossword. Please do not forget to add the file extension **.ts**. You must also enter the folder where you wish to save the crossword and the associated disk drive (e.g. C or D). To do this press the **Browse** button or use the key combination **Ctrl + B** to locate a file directly on the disk. In the dialog box

you can then select the desired file or create a new one. Alternatively you can use the key combination **Ctrl + F**. Confirm your selection with **OK**. The details are now shown in the dialog box "Save as". Confirm again with **OK**. You can delete your selection by pressing the **Cancel** button.

Exporting a Crossword

Under the menu-heading **File** choose the command **Export**. Then proceed as above for saving a crossword.

Closing *TrueSquare EPOC*

To close the **TrueSquare** program use the **File - Close** menu command sequence or alternatively tap once on the **TSquare** button at the very top of the toolbar to the right of the display. A dialog box is presented in which you have to confirm that you wish to close the application by tapping the **Close file** button. You can also close the program with the key combination **Ctrl + E**.

Solving Crosswords with *TrueSquare EPOC*

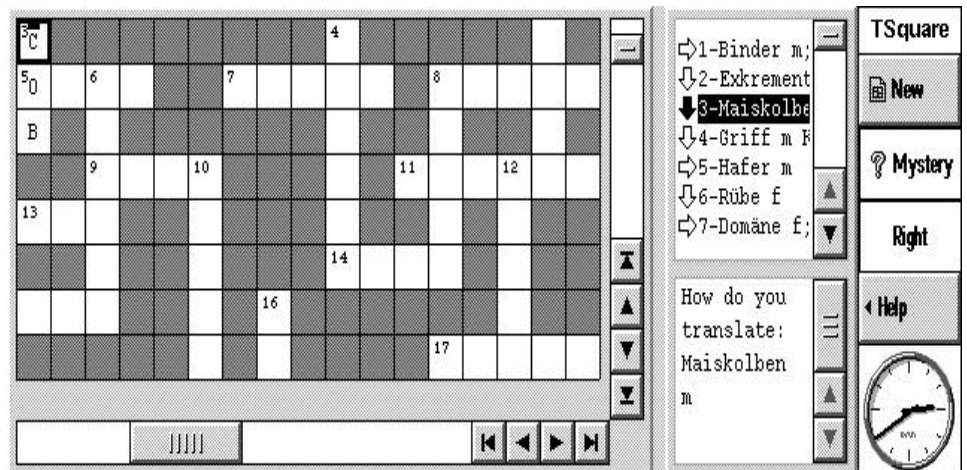
Vocabulary puzzle

Once you have accepted a crossword you can begin to solve it. The crossword puzzle works basically just like a conventional crossword puzzle but instead of clues, the user has a list of words at his disposal, the translation of which has to be entered into the crossword. The words in the list are numbered and each one has a horizontal or vertical arrow indicating whether it is an across or down word in the crossword. You can review the words in the list either by shifting the focus (the currently marked place in the list) using the pen or by pressing the arrows on the scroll bar. Alternatively you can also use the appropriate keys on the

keyboard. Sometimes the words or clues are too long to appear in full in the list to the right of the crossword puzzle. If you tap twice with the pen on the entry you will be able to see it in full for a short time in a black window.

When you insert a word or translation the arrow turns black. If you have activated the feature **Right word** in the **Settings** menu or in the toolbar, the arrow will turn black but only if the word which you have entered is correct.

In the crossword the first letter of each word has a number in the grid that corresponds to a word in the list. You are free to move around in the crossword grid or in the list. When you skip from one word to another in the crossword the focus jumps around in the list and vice-versa. The focus also indicates the direction in which the word has to be entered by marking it with a horizontal or vertical line as soon as it has been entered on the keyboard.



Delete

If you wish to **Delete** a letter press the **Space bar** on the keyboard once you have marked the letter either with the pen or with one of the arrow keys. If you wish to delete an entire word you can do so by using the **Del** key to delete all the letters, except those that are situated at the junction of two words.

Mystery word

At the start of each crossword puzzle a small movable window is opened (at the right hand side of the display) in which the mystery word will appear. When you enter letters in the numbered squares of the crossword grid which also contain a circle, these letters are automatically also inserted in the corresponding square in the **Mystery word window**. When you tap on a square in the mystery word window the

cursor will be placed automatically in the correspondingly numbered square in the puzzle. To prevent the small window from getting in the way, you can move it around with the pen or hide it by pressing the **Mystery** button in the toolbar.

Help

You can activate the **Help** feature either by selecting the **Help** menu or by tapping on the **Help** button in the toolbar at the right of the display. This enables you to choose from four options that allow you to solve a puzzle more easily:

?? **Show letter (Ctrl + B)**

?? **Show word (Ctrl + W)**

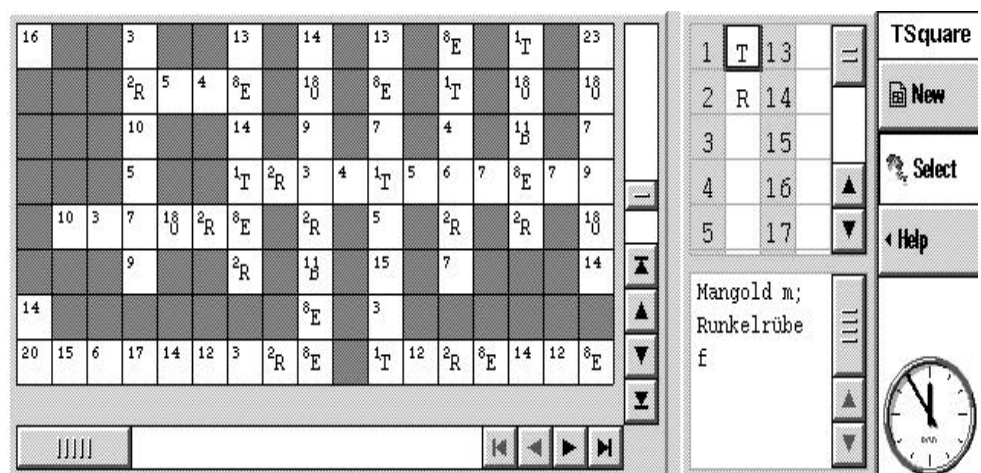
?? **Show crossword**

?? **Clear crossword**

The two last-mentioned features above are useful for people who wish to send puzzles to friends. They can transmit them as empty puzzles first and subsequently send the solutions.

Coded puzzle

In this crossword all the squares are numbered and each number represents a letter of the alphabet. The user has to discover which letters are behind each of the numbers and so gradually fill in the words in the crossword. You can do this type of crossword either in your mother tongue or in a foreign language. This enables you to improve your knowledge in general or of a special subject in particular.



At the start the program inserts a word of at least 5 letters in the crossword and then you can begin. If you press the **Insert** button on the toolbar at the right hand side of the display, the

letters of this first word are allocated to the numbers in the list and in the crossword.

If you enter a letter beside a number in the list that letter is automatically inserted in all the corresponding squares in the crossword.

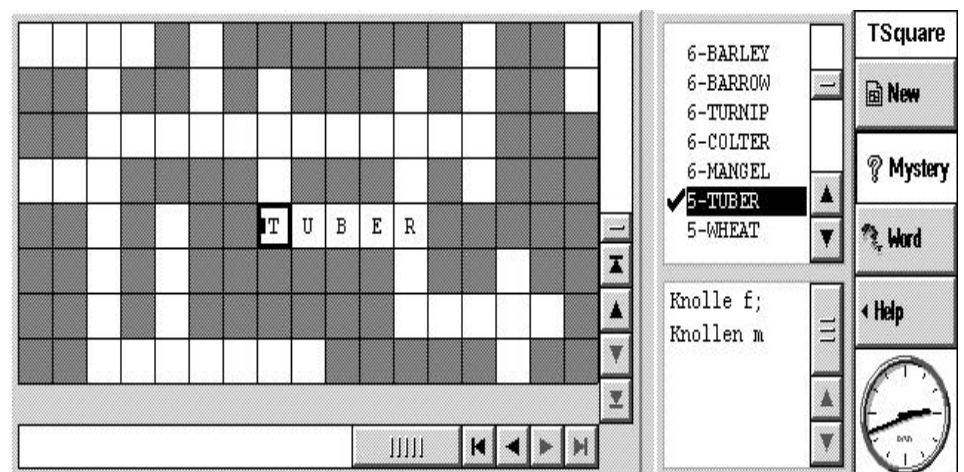
If you wish to enter a letter directly into the crossword you first have to tap the appropriate square with the pen and then enter the letter or a whole word. In this case the letters are not transferred to the list at the right. This allows you to test several solutions without changing the contents of the list. The **Delete** and **Help** functions are the same as for the vocabulary crossword above (see **Delete** and **Help**).

Grid puzzle

This crossword is similar to the coded puzzle. At the start the program inserts a word in the crossword and the user has to insert the remaining words from the list correctly in the crossword. The words are sorted in descending sequence of their number of letters i.e. the words with the most letters are at the top. This allows you to easily find all the words containing, for example, four letters.

As soon as you have found a word in the puzzle, you can place a tick beside the word in the list at the right by tapping with the pen in the box to the left of the number. This enables you to maintain an overview of the words that still have to be found. Just as in the vocabulary puzzle, you can display long words (e.g. one with 19 letters) in full in a black window by tapping it twice with the pen.

You can summon additional help by pressing the **Word** button in the toolbar at the right of the display thus causing a second word to be put into the puzzle. If you use foreign words then the degree of difficulty is of course much greater.



Just as in the case of the vocabulary puzzle, you have to discover the letters that are behind the squares with numbers and containing a circle in order to find a solution to the mystery word (see **Mystery word**). You can cause the small movable solution window to disappear by pressing the **Mystery** button on the toolbar at the right hand side of the display.

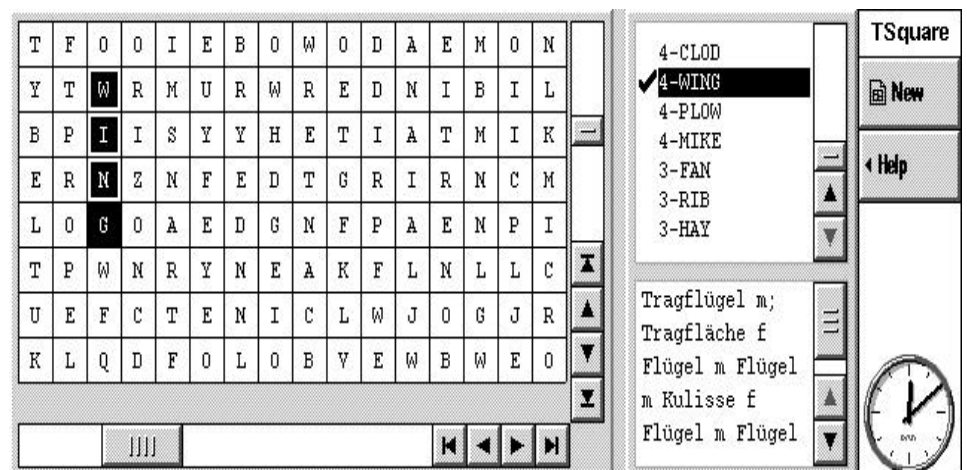
The **Delete** and **Help** functions are the same as for the vocabulary crossword above (see **Delete** and **Help**).

Alphacross puzzle

In this crossword the words have literally been inserted all over the place. The user has to try to locate them with the help of a word list. As in the grid puzzle, the words are sorted in descending sequence of their number of letters. Long words can be briefly displayed in full by tapping them twice with the pen.

You mark a word that you have found by tapping each letter of the word twice with the pen. This causes the squares to be highlighted in black. If you mark a square accidentally you can reverse the marking by tapping the square another twice. Alternatively you can use the **Space bar** on the keyboard.

When you have located a word, tick it with the pen in the list beside its number. This allows you to get an overview of how many words you still need to find.



At the end there should be only one word left over in the crossword: the **Mystery word**.

Data Security

Saving data


Saving and backing up data is no problem and easy to do. With the **PsiWin** software package you can easily establish a connection between your desktop PC and the mobile computer. To do this call up the Psion Desktop on your PC. The software establishes a connection to your mobile computer. You can then access the files on your mobile computer with the Windows-Explorer.

To now back up important files for **TrueSquare EPOC** go to the directory **TrueSquare** on the PC into which you copied the program on installation (e.g. disk C). Copy all those files with the extension **.ts** onto a storage medium of your choice e.g. the hard disk on your PC, on a diskette or on a CD-ROM.

Customer Service and Hotline

Support

If you have any problems or questions please get in touch with us at **AlphaSoft**, preferably via E-mail, via the "Contact" feature of our home page <http://www.trueterm.com>. Please do not forget to have available details about the product (TrueSquare 1.0) and your hardware and software (Epoc32, Windows 95/98/NT/2000)!

	
Production and Sales of Software	
Aldinger Strasse 86	
D-70806 Kornwestheim	
Germany	
Owner:	Ms. Sigrun Göllner
Hotline: Tel. +49 (0) 7141 / 85 05 06	
Mon, Tue 14.00-15.00 hrs., Wed - Fri 16.00-17.00 hrs.	
Fax (Support): +49 (0) 7141 / 850 507	
Tel. (sales): +49 (0) 7154 / 18 27 00	
Fax (sales): +49 71 54 / 49 39	
Homepage : www.trueterm.com	
E-Mail : support@trueterm.com , sales@trueterm.com	

Further information and support for **Psion/EPOC** is available via the **Psion** home page at <http://www.pSION-gmbh.com>.

Appendix

Key combinations (Shortcuts)

<i>Ctrl + N</i>	New crossword
<i>Ctrl + O</i>	Open crossword
<i>Ctrl + E</i>	Close TrueSquare
<i>Ctrl + L</i>	Show letter
<i>Ctrl + W</i>	Show word
<i>Ctrl + T</i>	Hide toolbar
<i>Ctrl + J</i>	Go to next word while resolving the puzzle

Index

A

Accept 7, 8
Alphacross puzzle 15
Alphacross puzzle 3, 5
AlphaSoft 3, 17
Appendix 18

B

Back 9
Browse 9, 10

C

Cancel 9, 11
Coded puzzle 13
Coded puzzle 3, 5
Continue 5, 7, 8
Crossword
 export 11
 name 9
 new 4
 open 9
 save 10
 settings 9
 size 7
 solving 11

D

Data Security 16
Delete 12
Desktop PC 16

E

Expand 10
Extras 4
Extras menu 4

F

File 11
Folders 9
Font 10

G

Generation
 start 8
Grid puzzle 3, 5, 7, 14

H

Help 13
Hotline 17

K

Key combinations (Shortcuts) 18

L

Languages 6

M

Menu 4
Menu bar 4
Menu key 4
Mystery 15
Mystery word 5, 7, 12
 none 5
 personal 5
 supplied 5
 window 12

O

Own data
 importing 5

P

PalmOS 3
Psion 17
PsiWin 16

R

Remaining time 8
Right 10
Right word 10, 12

S

- Select 6
- Settings
 - options 9
- Settings 9
 - expand 10
 - right word 12
 - right word 10
 - show toolbar 10
- Show toolbar 10
- Space-bar 12
- Stop 8
- Subjects
 - mine 6
 - supplied 6
- Subjects and Languages
 - choosing 5
- Support 17

T

- Time per puzzle 7
- Toolbar 4, 14, 15
- Total time 7
- TrueCard 3
- TrueSquare EPOC 3
 - close 11
 - features 4
 - menu 4
 - registration 4
 - starting 4
- TrueTerm 3
- TSquare 4, 11
- Type of generation 7

V

- Vocabulary puzzle* 11
- Vocabulary puzzle 3, 5, 7

W

- Windows 95/98/NT/2000 3
- Windows CE 3
- Word 6